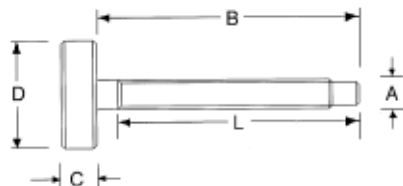


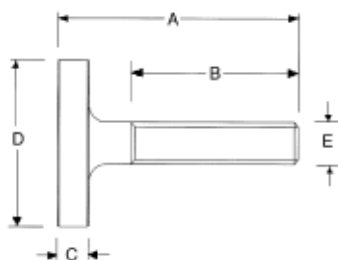
Knurled Head Adjusting Screws



- Available in carbon steel (black oxide finish) or 300 series stainless steel
- Two piece construction
- Straight knurl
- Screws not fully threaded, thread length is the "L" dimension

Low Carbon Steel PART #	Stainless Steel PART #	Thread A	L	B	C	D
-	KHS0-4SS	#10-32	3/4	1	5/16	3/4
-	KHS0-3SS	#10-32	1-1/4	1-1/2	5/16	3/4
-	KHS0-5SS	#10-32	1-3/4	2	5/16	3/4
KHS0-1	KHS0-1SS	#10-24	1-1/16	1-1/4	5/16	3/4
KHS0-2	KHS0-2SS	#10-24	1-7/16	1-5/8	5/16	3/4
KHS0	KHS0SS	#10-24	1-13/16	2	5/16	3/4
KHS1-0	KHS1-0SS	1/4-20	3/4	1	5/16	1
KHS1-1	KHS1-1SS	1/4-20	1-1/4	1-1/2	5/16	1
KHS1-2	KHS1-2SS	1/4-20	1-3/4	2	5/16	1
KHS1	KHS1SS	1/4-20	2-1/4	2-1/2	5/16	1
KHS2-0	KHS2-0SS	5/16-18	7/8	1	3/8	1-1/8
KHS2-1	KHS2-1SS	5/16-18	1-3/16	1-1/2	3/8	1-1/8
KHS2-3	KHS2-3SS	5/16-18	1-7/16	1-3/4	3/8	1-1/8
KHS2-2	KHS2-2SS	5/16-18	1-15/16	2-1/4	3/8	1-1/8
KHS2-4	KHS2-4SS	5/16-18	2-7/16	2-3/4	3/8	1-1/8
KHS2	KHS2SS	5/16-18	2-11/16	3	3/8	1-1/8
KHS3-0	KHS3-0SS	3/8-16	1-1/8	1-1/2	7/16	1-1/4
KHS3-1	KHS3-1SS	3/8-16	1-5/8	2	7/16	1-1/4
KHS3-2	KHS3-2SS	3/8-16	2-1/8	2-1/2	7/16	1-1/4
KHS3	KHS3SS	3/8-16	2-3/8	3	7/16	1-1/4
KHS3-3	KHS3-3SS	3/8-16	3-1/8	3-1/2	7/16	1-1/4
KHS3-4	KHS3-4SS	3/8-16	3-5/8	4	7/16	1-1/4
KHS4-1	KHS4-1SS	1/2-13	2	2-1/2	1/2	1-1/4
KHS4-0	KHS4-0SS	1/2-13	2-1/4	2-3/4	1/2	1-1/4
KHS4-2	KHS4-2SS	1/2-13	2-1/2	3	1/2	1-1/4
KHS4	KHS4SS	1/2-13	3	3-1/2	1/2	1-1/4

Stainless Steel Knurled Head Screws



- Machined from 303 stainless steel
- One piece construction
- Oversized head, straight knurl
- Screws are not fully threaded. Thread length is the 'B' dimension.

PART #	E Thread	A	B	C	D
8251	#4-40	1	7/16	1/2	1/4
8252	#4-40	1-1/4	5/8	1/2	1/4
82505	#4-40	1-1/2	3/4	1/2	1/4
8253	#4-40	1/2	5/16	1/8	3/8
8254	#4-40	5/8	7/16	1/8	3/8
8255	#6-32	1	7/16	1/2	1/4
8256	#6-32	1-1/4	5/8	1/2	1/4
8257	#6-32	1-1/2	13/16	1/2	1/4
8258	#6-32	1/2	5/16	1/8	3/8
8259	#6-32	5/8	3/8	1/8	3/8
8260	#8-32	1	7/16	1/2	1/4
8261	#8-32	1-1/4	5/8	1/2	1/4
8262	#8-32	1-1/2	13/16	1/2	1/4
8263	#8-32	1/2	5/16	1/8	3/8
8264	#8-32	5/8	3/8	1/8	3/8
8266	#10-24	15/16	5/8	3/16	3/8
8267	#10-24	1-3/16	13/16	3/16	3/8
8268	#10-24	1-7/16	1	3/16	3/8
8269	#10-24	15/16	5/8	3/16	1/2
8270	#10-24	1-3/16	13/16	3/16	1/2
8271	#10-24	1-7/16	1	3/16	1/2
8273	#10-24	15/16	5/8	3/16	3/4
8274	#10-24	1-3/16	13/16	3/16	3/4
8275	#10-24	1-7/16	1	3/16	3/4
8276	#10-24	1-11/16	1-1/4	3/16	3/4
8277	#10-32	11/16	7/16	3/16	3/8
8280	#10-32	1-7/16	1	3/16	3/8
8281	#10-32	15/16	5/8	3/16	1/2
8282	#10-32	1-3/16	13/16	3/16	1/2
8283	#10-32	1-7/16	1	3/16	1/2
8284	#10-32	1-11/16	1-1/4	3/16	1/2
8285	#10-32	15/16	5/8	3/16	3/4
8286	#10-32	1-3/16	13/16	3/16	3/4
8287	#10-32	1-7/16	1	3/16	3/4
8289	1/4-20	15/16	5/8	3/16	3/4
8290	1/4-20	1-3/16	13/16	3/16	3/4
8291	1/4-20	1-7/16	1	3/16	3/4
8292	1/4-20	1-11/16	1-1/4	3/16	3/4
8299	1/4-20	1-13/16	1-3/8	3/16	3/4
8293	1/4-20	2-3/16	1-5/8	3/16	3/4
8294	1/4-20	15/16	5/8	3/16	1
8295	1/4-20	1-3/16	13/16	3/16	1
8296	1/4-20	1-7/16	1	3/16	1
8297	1/4-20	1-11/16	1-1/4	3/16	1
8298	1/4-20	2-3/16	1-5/8	3/16	1